

NAEEM KHAN STUDIOS

MIAMI RIVER COMMISSION

JUNE 3, 2019

SHEET LIST

A0.01 - PROJECT DATA
A0.02 - SITE LOCATION AND PHOTOS
A0.03 - AERIAL CONTEXT
A0.04 - AERIAL CONTEXT
A0.05 - AERIAL CONTEXT

A1.00 - ILLUSTRATIVE SITE PLAN
A1.01 - GROUND LEVEL PLAN
A1.02 - LEVEL 2 PLAN
A1.03 - LEVEL 3 PLAN
A1.04 - LEVEL 4 PLAN
A1.05 - LEVEL 5 PLAN

A2.01 - EXTERIOR RENDERING
A2.02 - EXTERIOR RENDERING

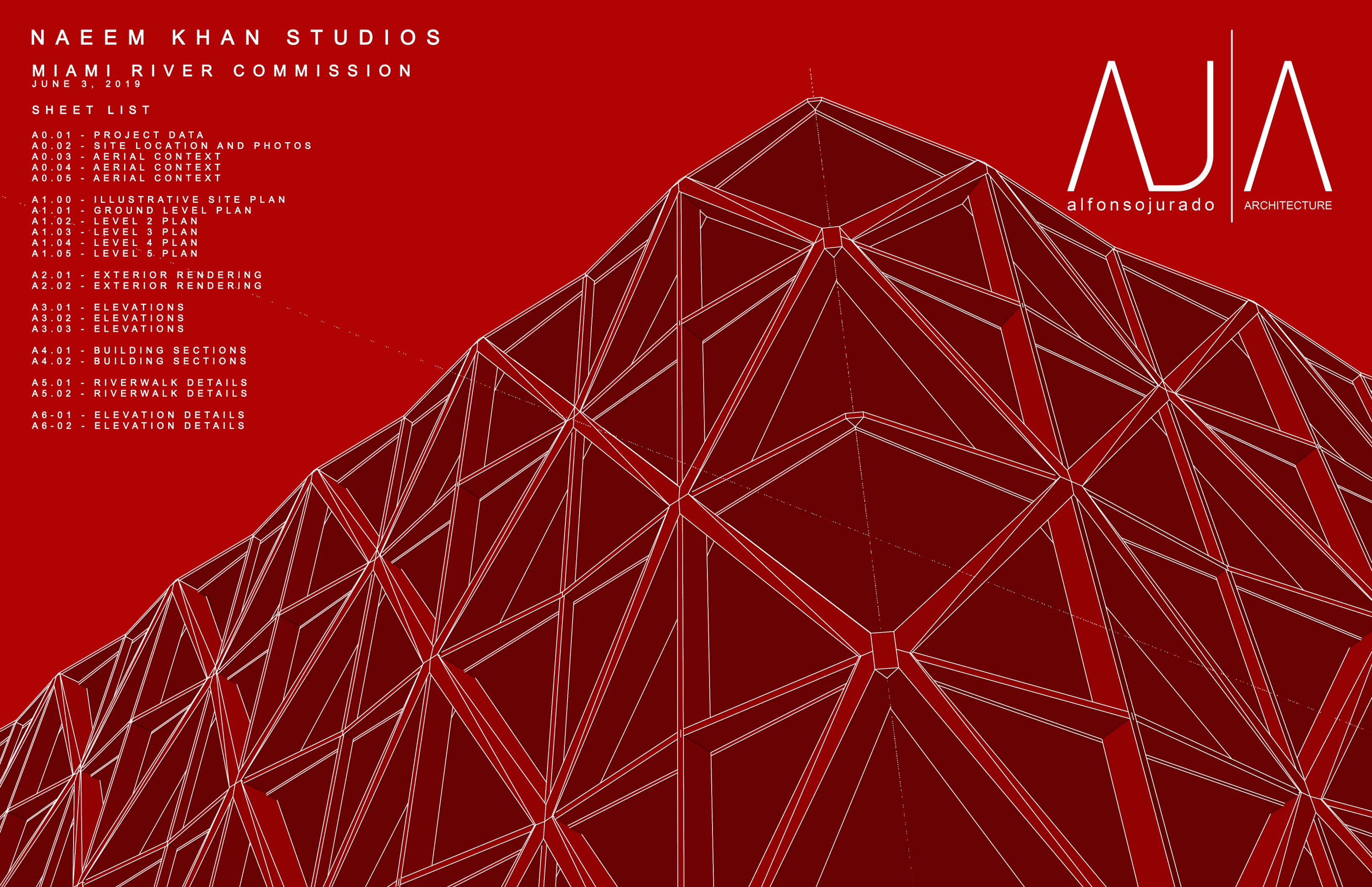
A3.01 - ELEVATIONS
A3.02 - ELEVATIONS
A3.03 - ELEVATIONS

A4.01 - BUILDING SECTIONS
A4.02 - BUILDING SECTIONS

A5.01 - RIVERWALK DETAILS
A5.02 - RIVERWALK DETAILS

A6.01 - ELEVATION DETAILS
A6.02 - ELEVATION DETAILS

AJA
alfonsojurado ARCHITECTURE



I. GENERAL LOT INFORMATION			
MUNICIPALITY	City of Miami		
ZONING CLASSIFICATION	D3 Marine Related Industrial		
FOLIO NUMBER	01-3135-031-0010		
PROPERTY ADDRESS	1175 NW South River Drive, Miami, FL 33137		
FEMA ZONE	ZONE-AE Elev. +9 Ft NGVD		
II. LOT OCCUPATION			
NET LOT AREA:		REQUIRED 10,000 SF Minimum	PROVIDED 41,031 SF
LOT WIDTH:		100' Minimum	218 SF
LOT COVERAGE:	90% Max =	36,928 SF	19,862 SF
FLOOR LOT RATIO (F.L.R.):	N/A		
FRONTAGE:	None		
DENSITY:	N/A		
OPEN SPACE:	5% Min. =	2,052 SF	21,169 SF
III. BUILDING SETBACKS			
PRINCIPAL FRONT (South River Dr)		REQUIRED 5'-0" Minimum	PROVIDED 5'-0"
PRINCIPAL FRONT (Miami River Waterfront)		25'-0" Minimum	25'-0"
SIDE (East)	Abutting Side T5 1st through 6th Story	10'-0" Minimum	10'-0"
SIDE (West)		0'-0" Minimum	0'-0"
IV. BUILDING CONFIGURATION			
MAX HEIGHT		REQUIRED Max. 8 Stories	PROVIDED 5 Stories
V. PARKING ANALYSIS			
Industrial: 1 Space/1000 SF of Industrial Use	29,513 SF / 1000	REQUIRED 30 Spaces	PROVIDED 46 Spaces
Educational: 2 Spaces/1000 SF of Educational Use	23,134 SF x 2 / 1000		
	Shared Parking Reduction (Industrial/1.1 + Educational)	74 Spaces	
	34% Reduction by Waiver (74 x .5 = 37)	37 Spaces	
		Off-Site by Lease	42 Spaces
		On Street Spaces	8 Spaces
		Total	50 Spaces
VI. LOADING ANALYSIS			
From 25,000 sf to 50,000 sf	420 SF Berth (Commercial Berth)	REQUIRED 1 Berth	PROVIDED 1 Berth

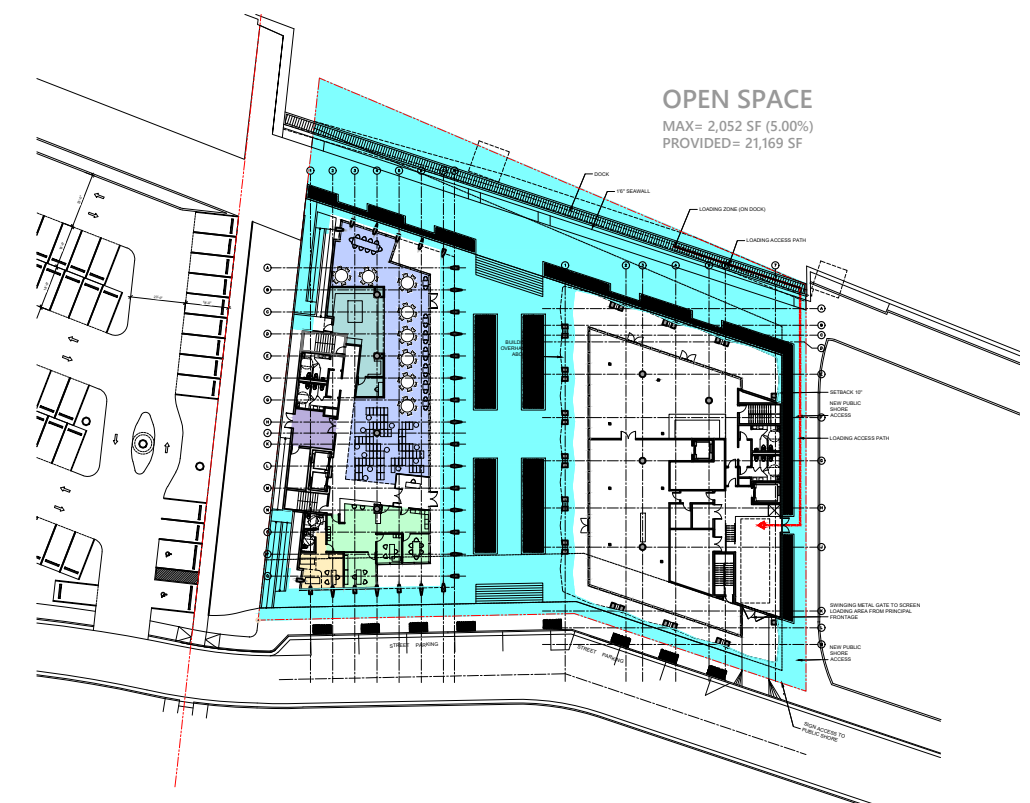
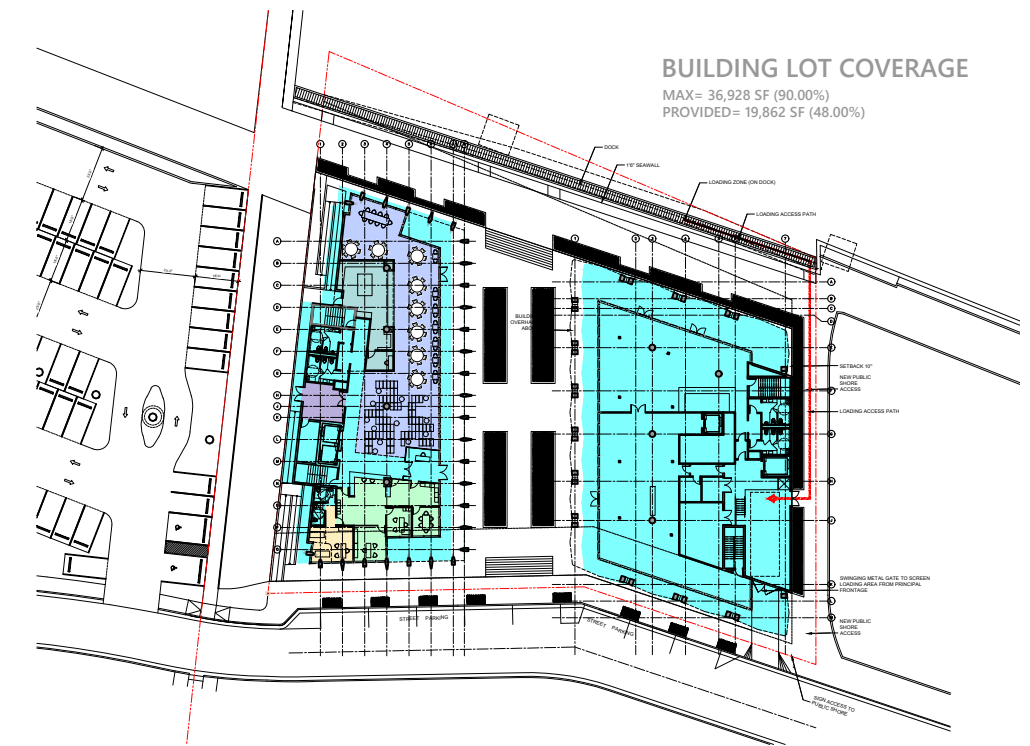
GROSS BUILDING AREAS

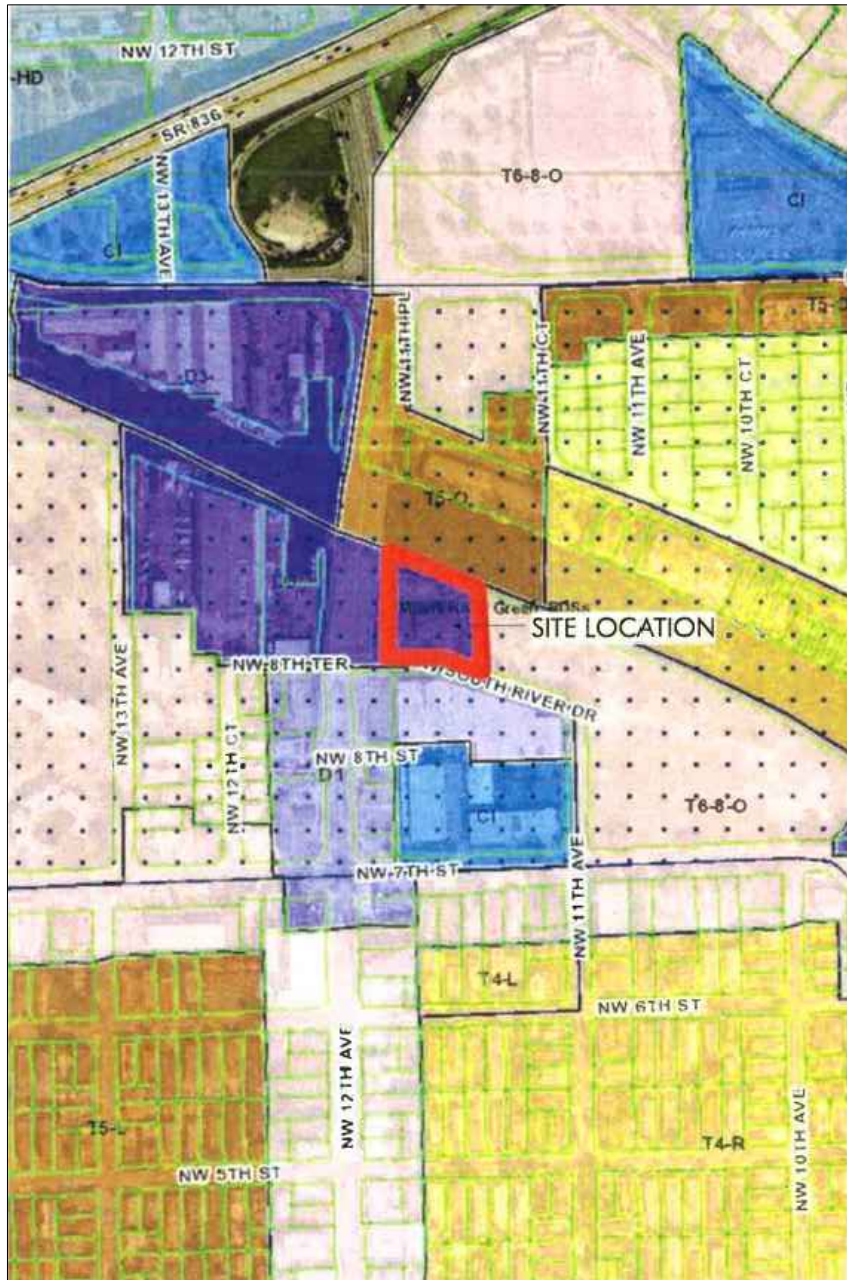
STUDIO BUILDING

LEVEL	GSF
1	8440
2	11332
3	11332
4	11332
5	6168
TOTAL	48604

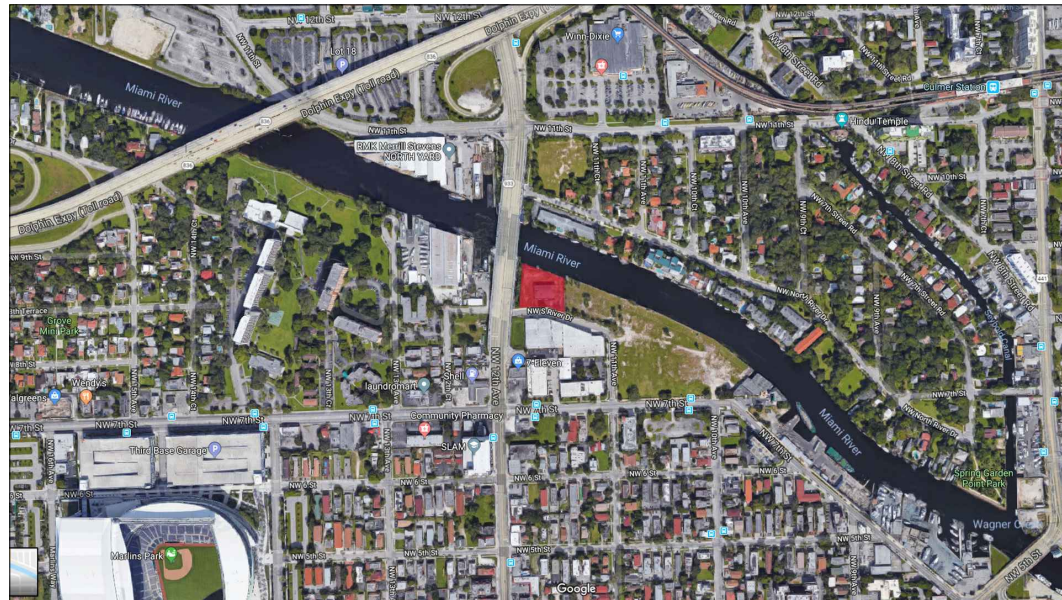
SCHOOL BUILDING

LEVEL	GSF
1	7180
2	9173
3	9173
4	9173
TOTAL	34699
TOTAL	83303





MIAMI 21 ZONING MAP



LOCATION MAP: SITE



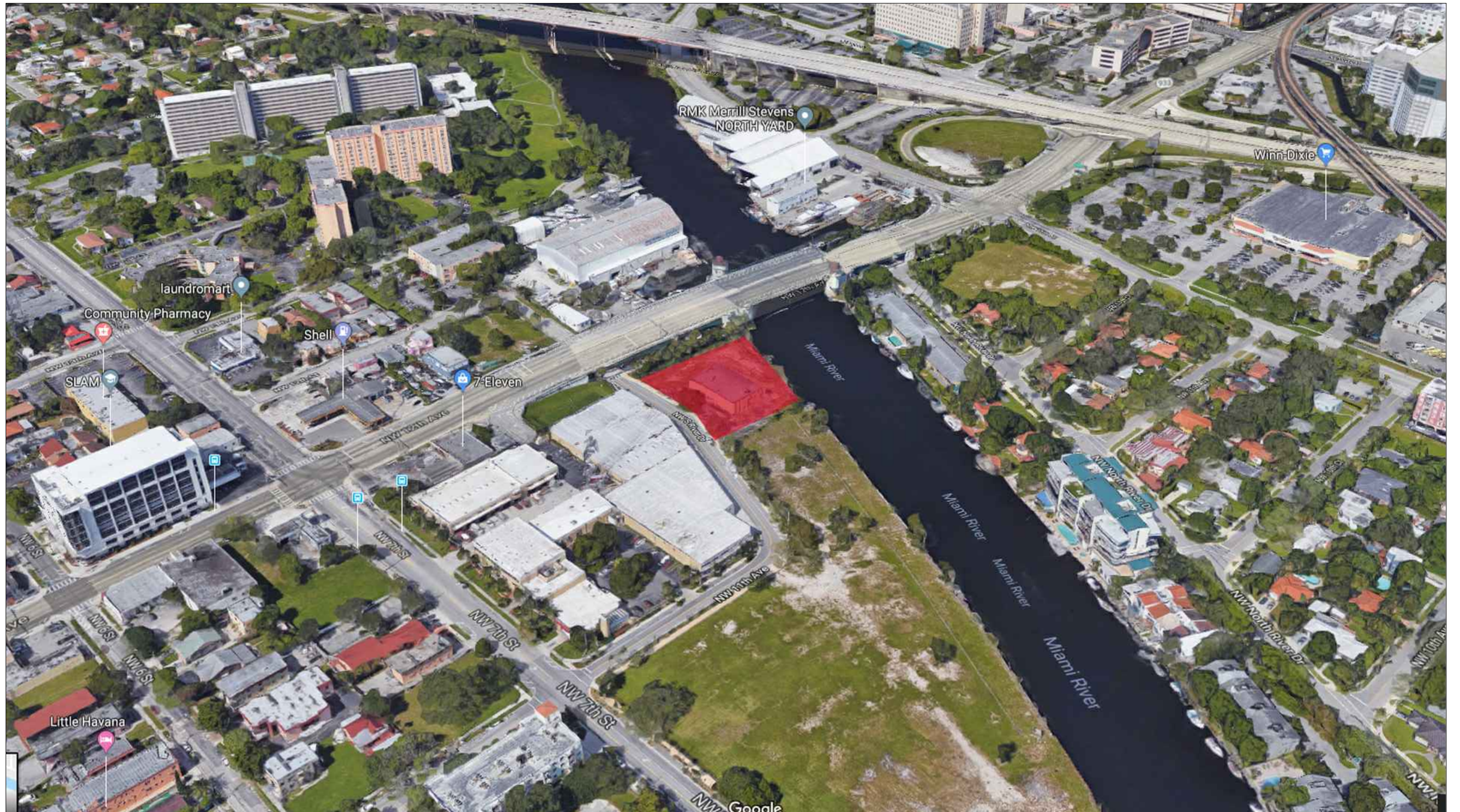
SITE VIEW FROM MIAMI RIVER



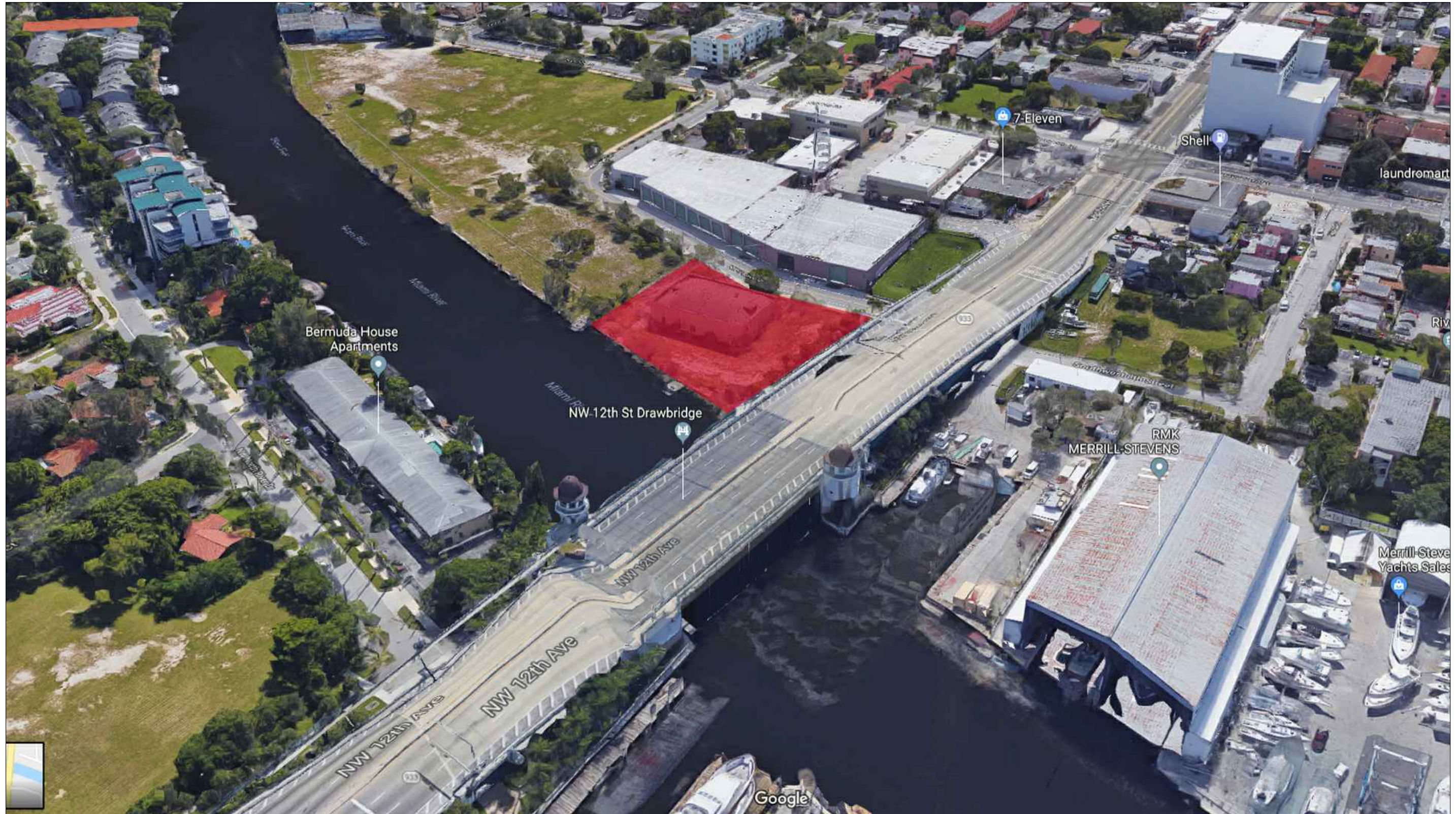
SITE VIEW TOWARDS 12ST NW DRAWBRIDGE FROM NW SOUTH RIVER DR



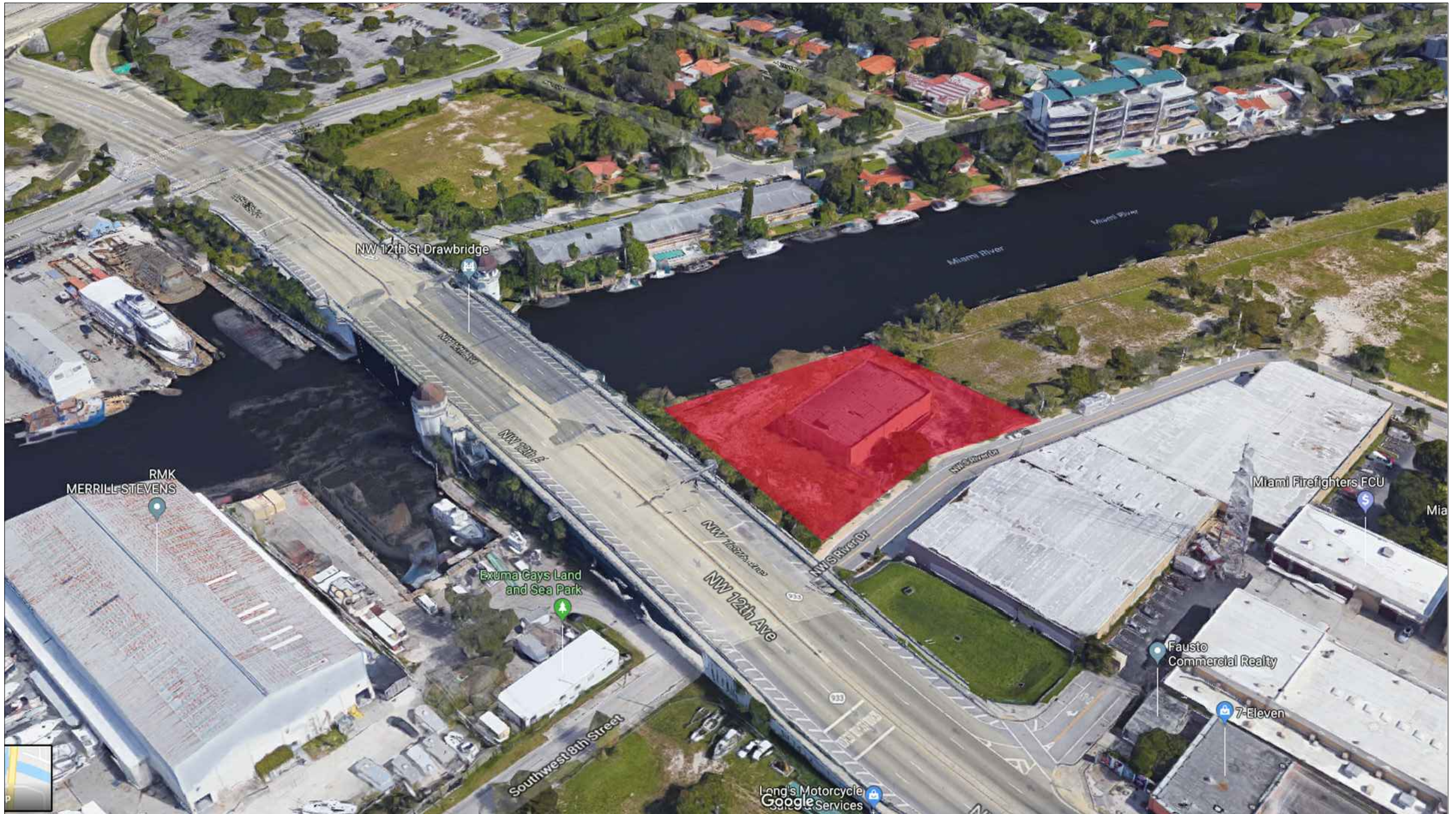
SITE VIEW TOWARDS MIAMI RIVER FROM NW SOUTH RIVER DR



AERIAL SITE VIEW FROM SE TOWARDS NW



AERIAL SITE VIEW FROM NW TOWARDS SE



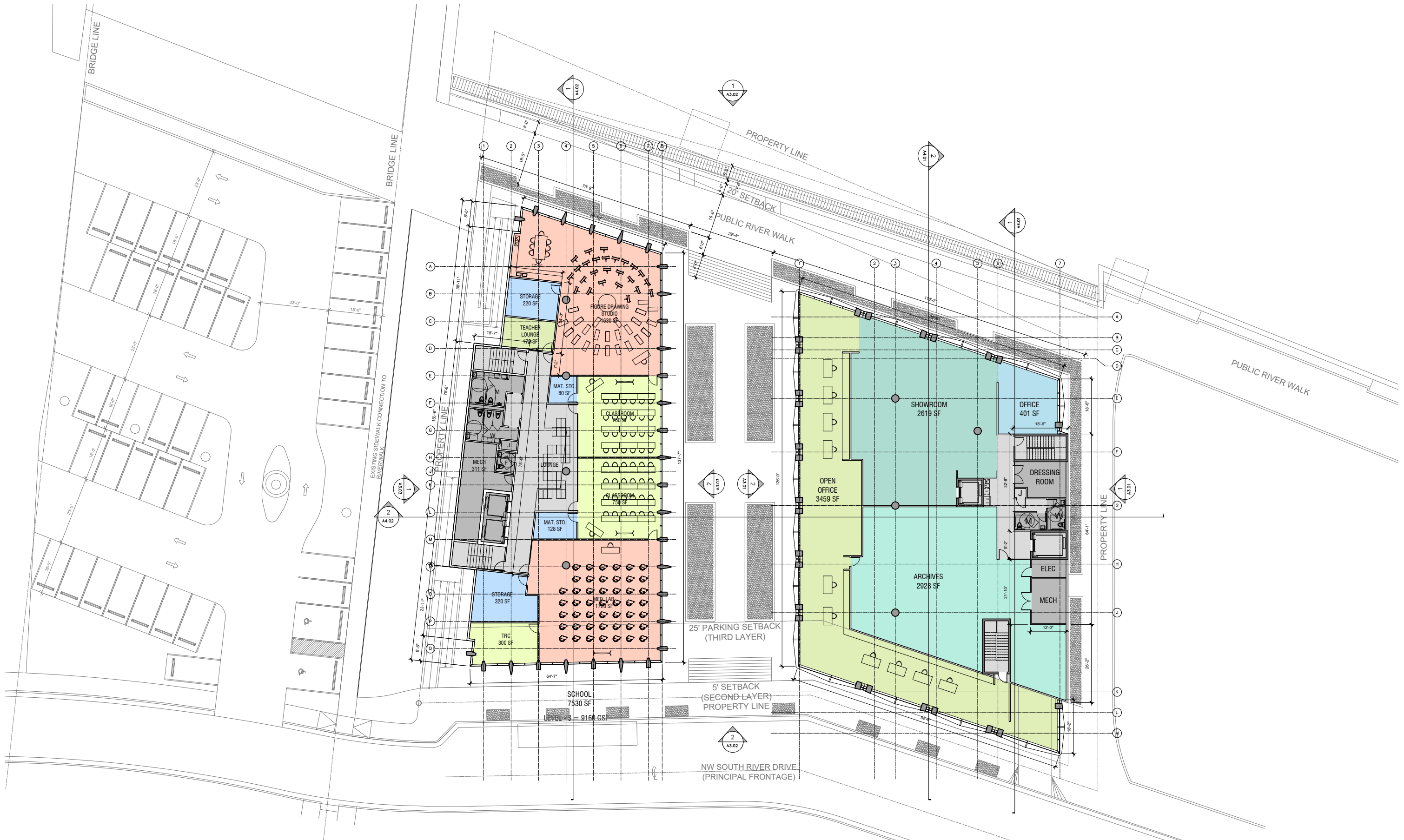
AERIAL SITE VIEW FROM SW TOWARDS NE





NAEM KHAN STUDIOS
 1175 NW South River Drive, Miami, Florida
 April 26, 2019



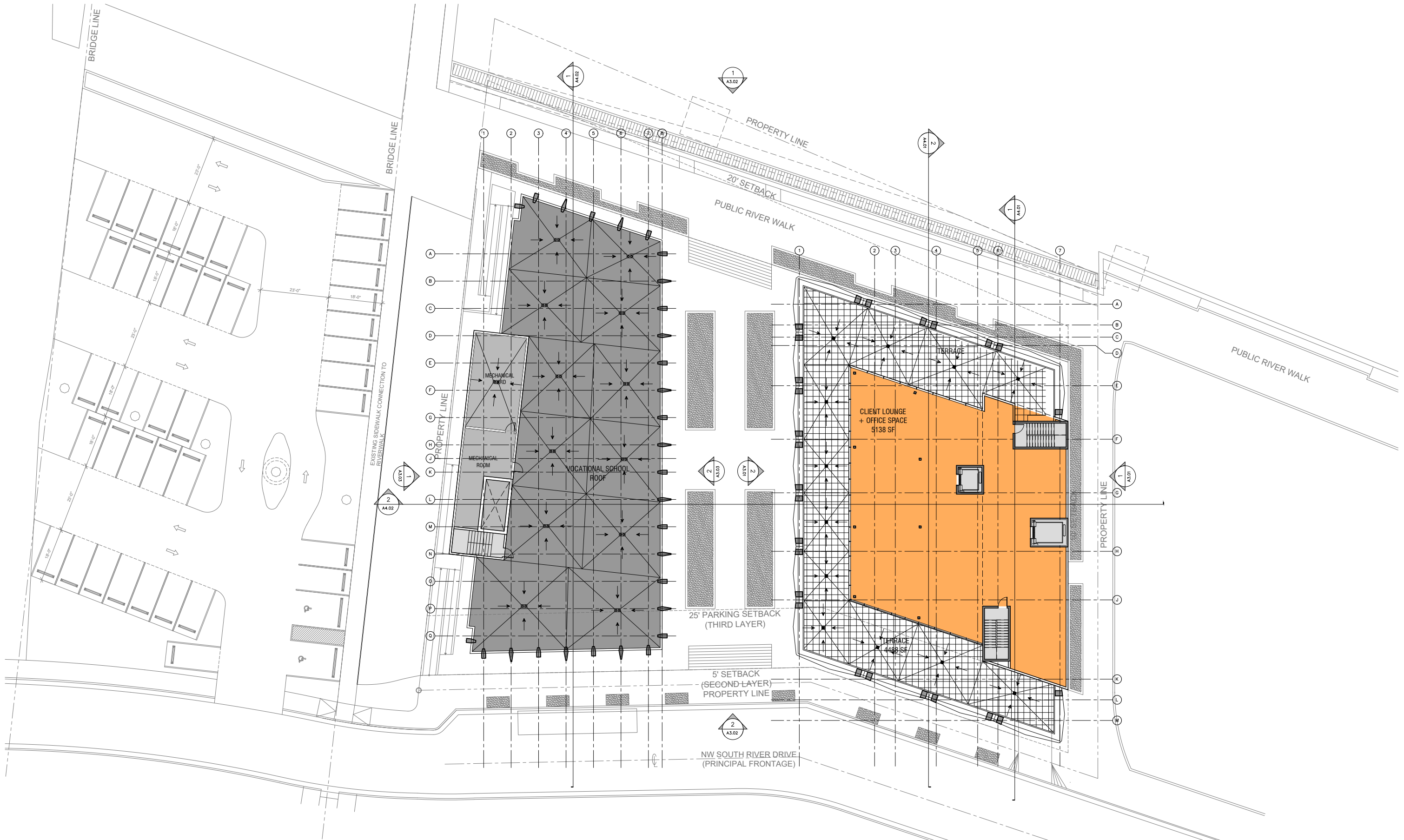


NAEEM KHAN STUDIOS

1175 NW South River Drive, Miami, Florida

April 26, 2019





N A E E M K H A N S T U D I O S

1175 NW South River Drive, Miami, Florida

April 26, 2019



aj/A

alfonsojurado/ARCHITECTURE
4304 NE 2nd AVENUE
Miami, FL 33137
305.206.6214 T

N A E E M K A H N S T U D I O S

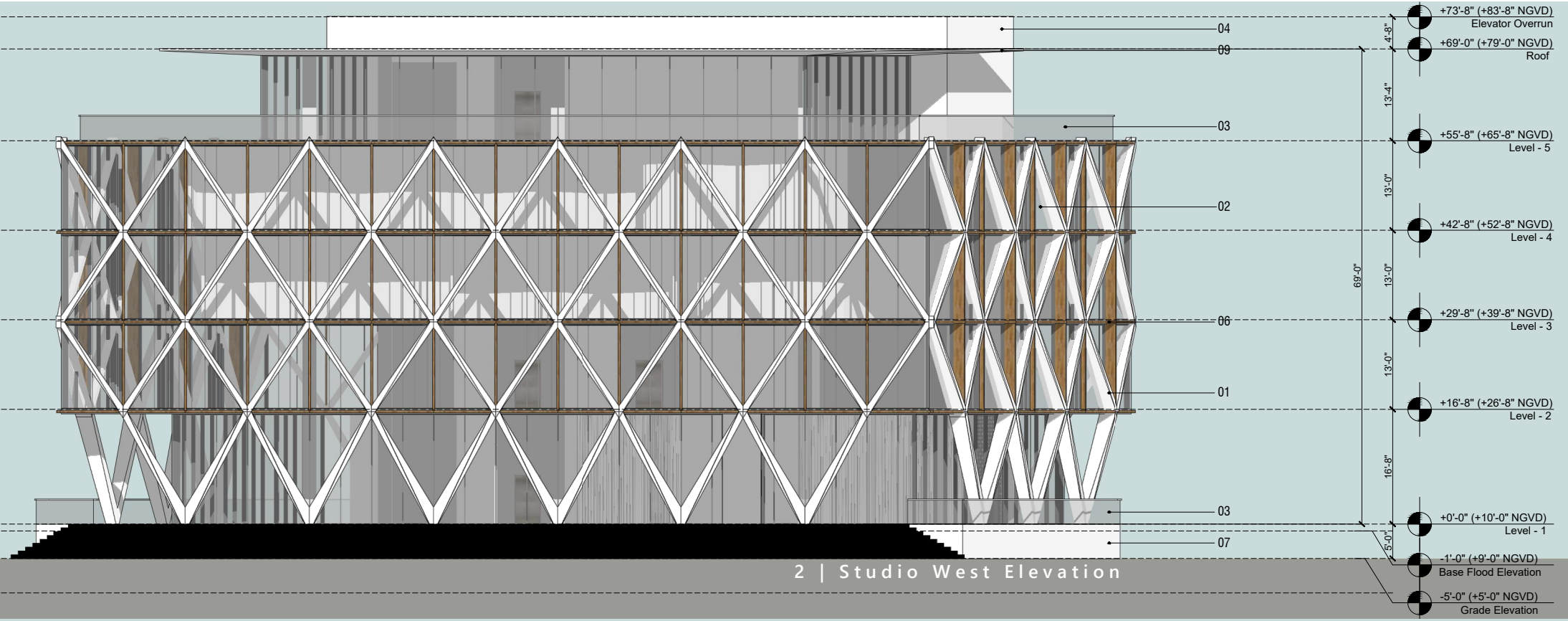
1175 NW South River Drive, Miami, Florida

December 21, 2018

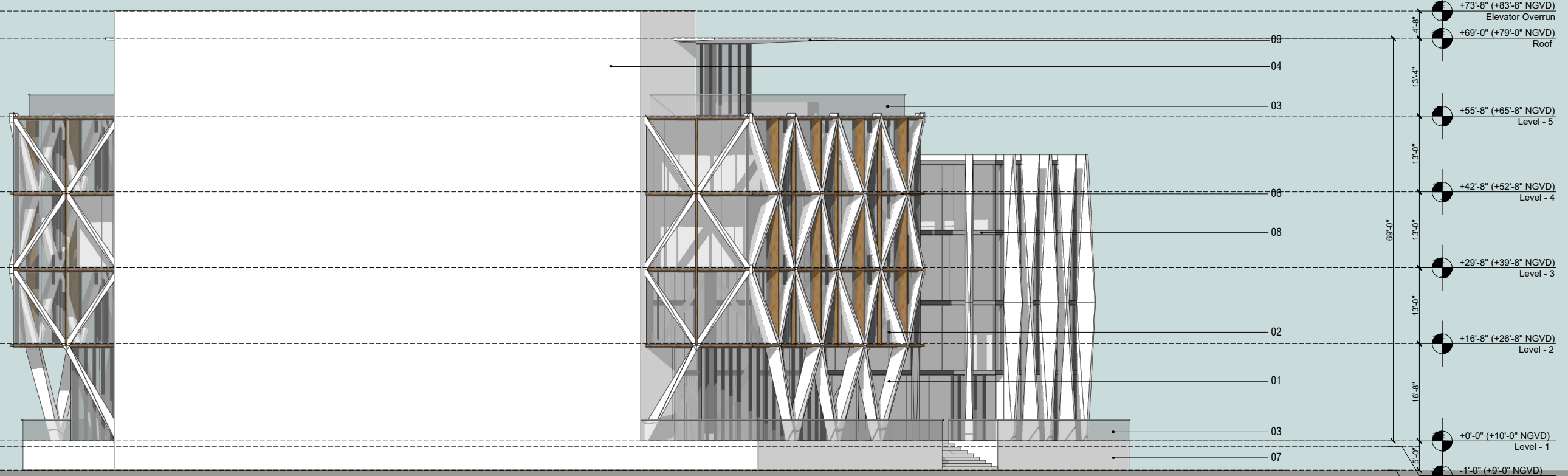
EXTERIOR RENDERING
A2|01







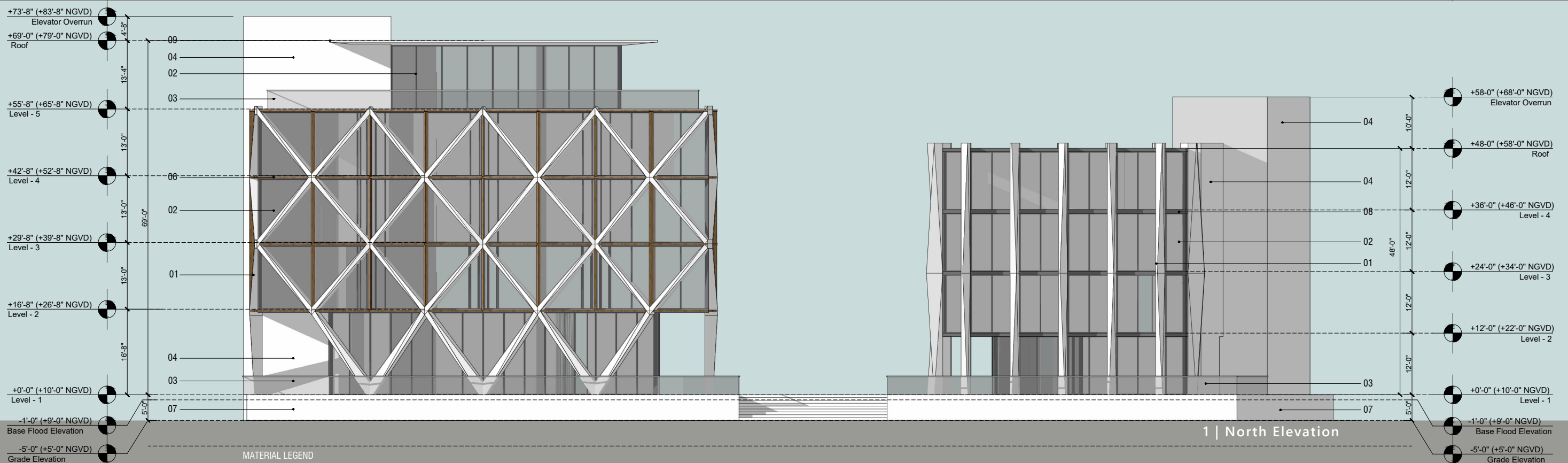
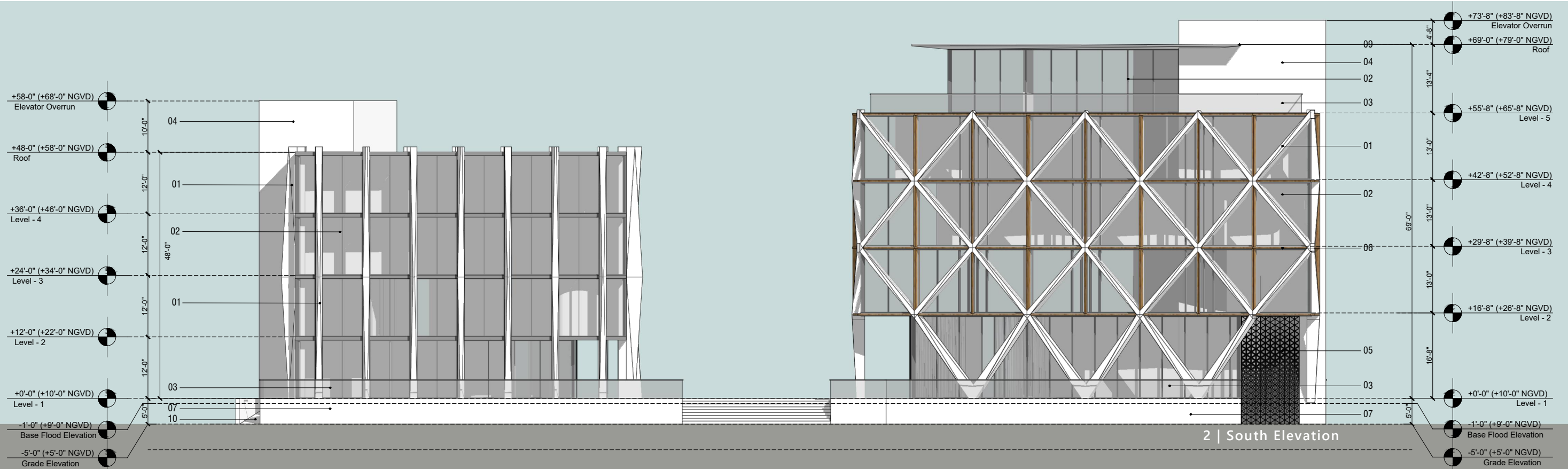
2 | Studio West Elevation



1 | Studio East Elevation

MATERIAL LEGEND

- 01 - EXPOSED ARCHITECTURAL CONCRETE STRUCTURAL ELEMENT
- 02 - 4-WAY STRUCTURAL SILICONE GLAZING SYSTEM
- 03 - GLASS RAILING
- 04 - EXPOSED ARCHITECTURAL CONCRETE WALL
- 05 - STEEL LOADING DOCK GATE
- 06 - IPE WOOD FINIS
- 07 - EXPOSED ARCHITECTURAL CONCRETE
- 08 - SLATE GREY ALUMINUM SLAB COVER
- 09 - EXPOSED ARCHITECTURAL CONCRETE ROOF SLAB
- 10 - RAMP

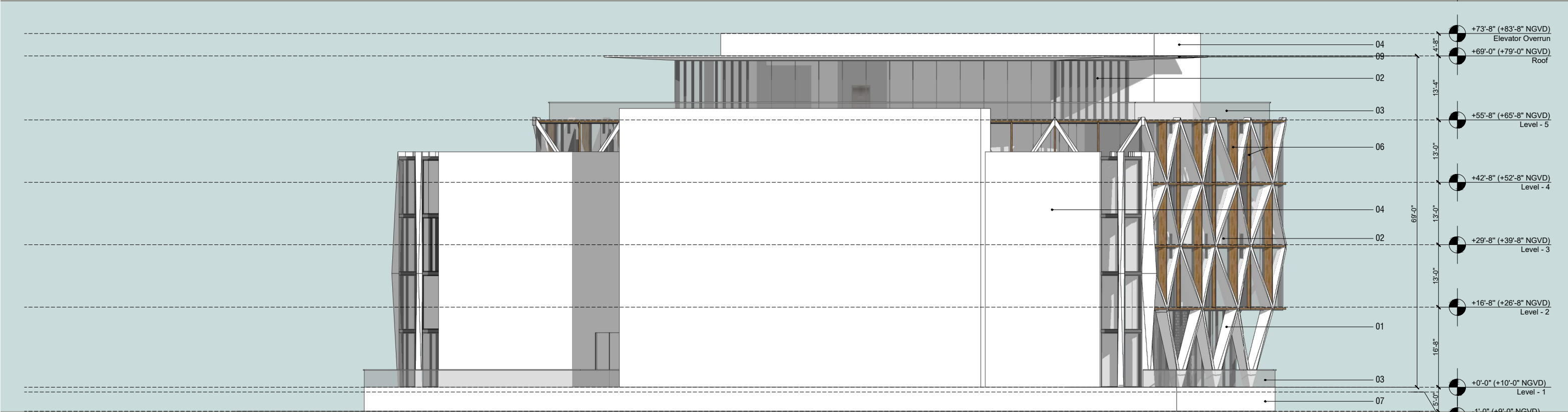


MATERIAL LEGEND

- 01 - EXPOSED ARCHITECTURAL CONCRETE STRUCTURAL ELEMENT
- 02 - 4-WAY STRUCTURAL SILICONE GLAZING SYSTEM
- 03 - GLASS RAILING
- 04 - EXPOSED ARCHITECTURAL CONCRETE WALL
- 05 - STEEL LOADING DOCK GATE
- 06 - IPE WOOD FINIS
- 07 - EXPOSED ARCHITECTURAL CONCRETE
- 08 - SLATE GREY ALUMINUM SLAB COVER
- 09 - EXPOSED ARCHITECTURAL CONCRETE ROOF SLAB
- 10 - RAMP



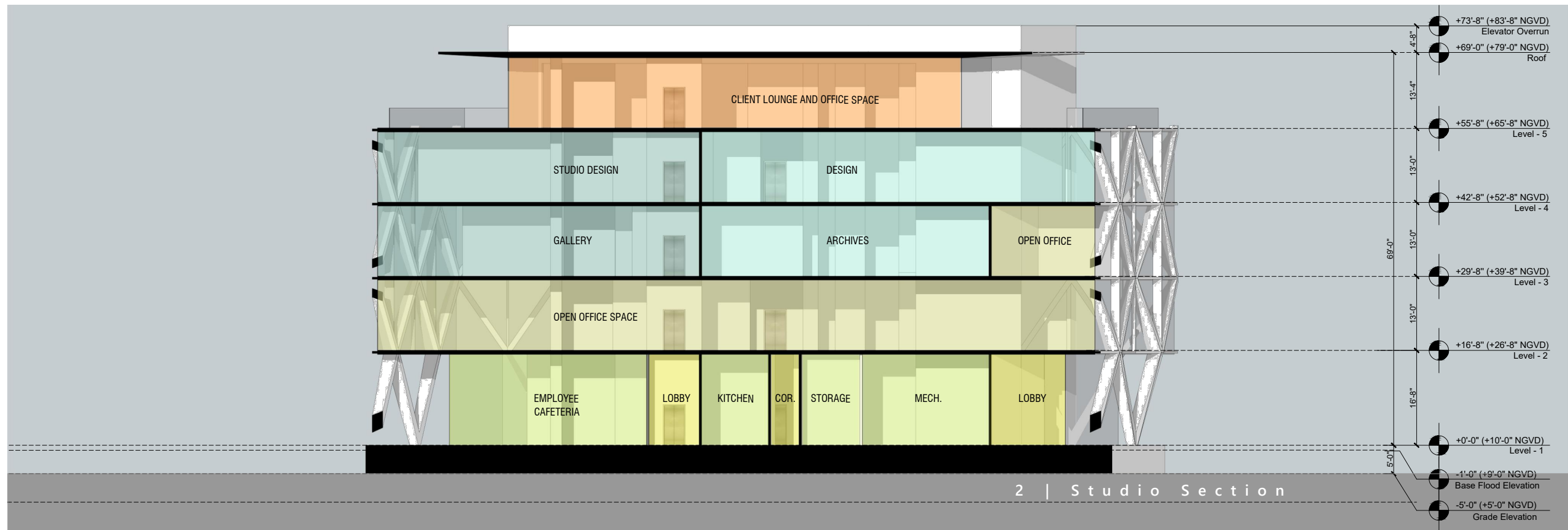
2 | School East Elevation



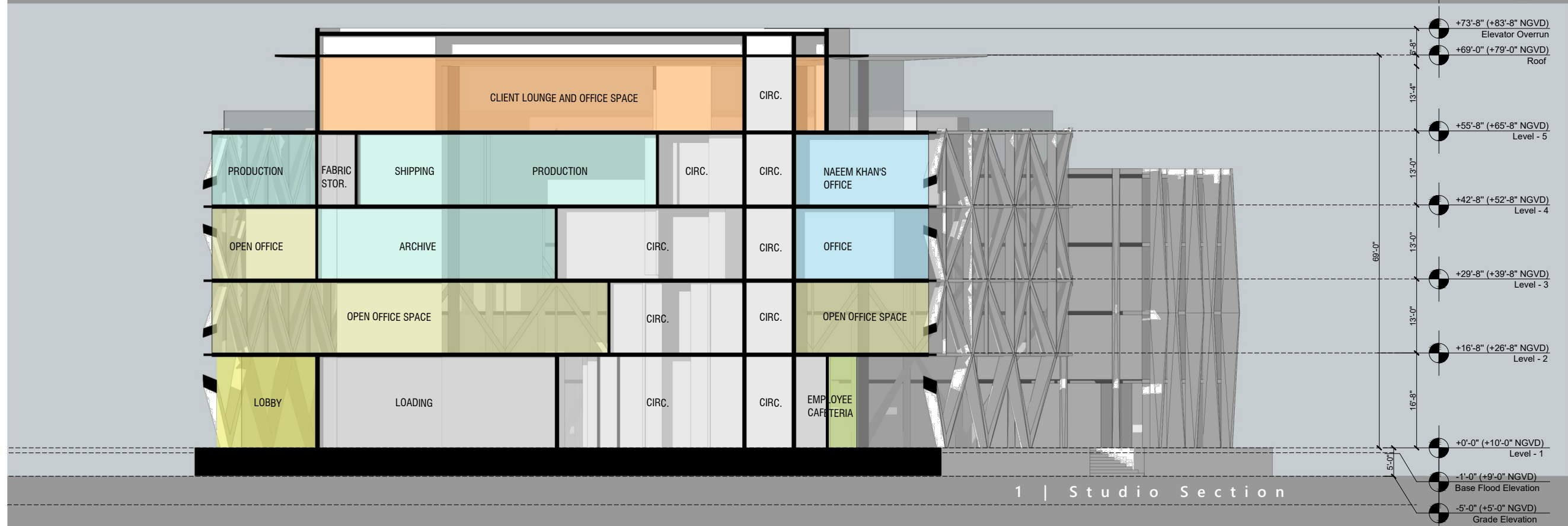
1 | School West Elevation

MATERIAL LEGEND

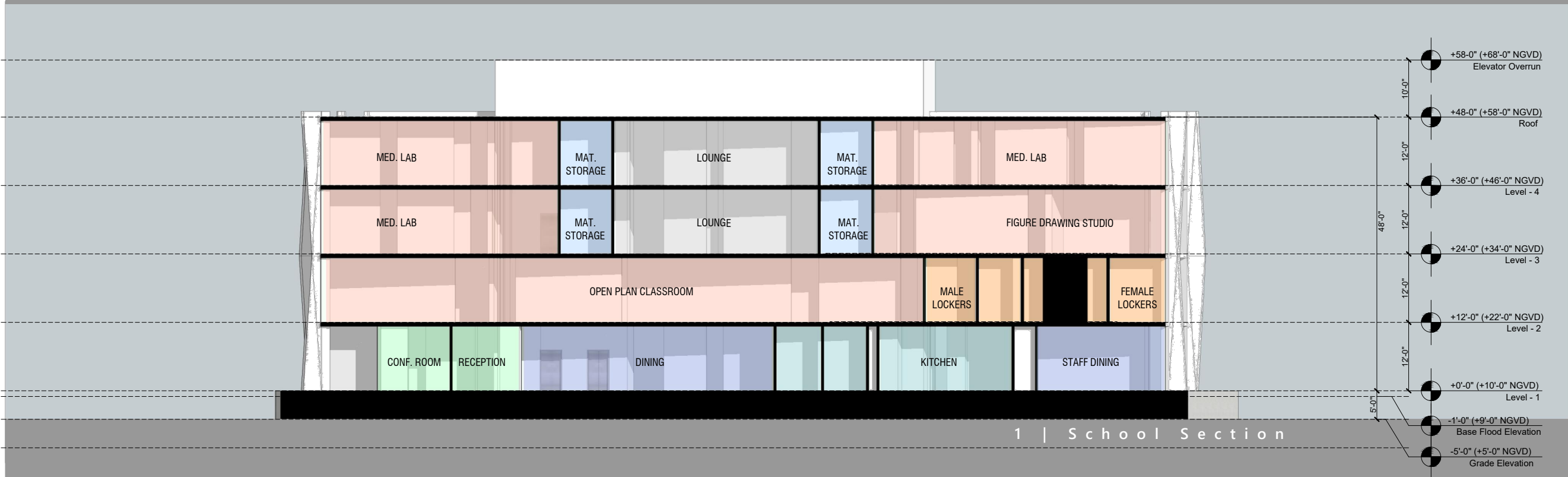
- 01 - EXPOSED ARCHITECTURAL CONCRETE STRUCTURAL ELEMENT
- 02 - 4-WAY STRUCTURAL SILICONE GLAZING SYSTEM
- 03 - GLASS RAILING
- 04 - EXPOSED ARCHITECTURAL CONCRETE WALL
- 05 - STEEL LOADING DOCK GATE
- 06 - IPE WOOD FINIS
- 07 - EXPOSED ARCHITECTURAL CONCRETE
- 08 - SLATE GREY ALUMINUM SLAB COVER
- 09 - EXPOSED ARCHITECTURAL CONCRETE ROOF SLAB
- 10 - RAMP



2 | Studio Section



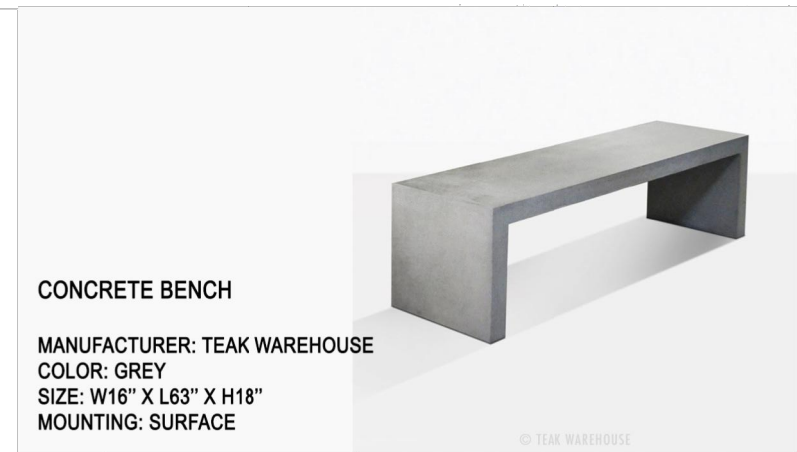
1 | Studio Section







RIVERWALK SECTION TOWARD THE VOCATIONAL SCHOOL



CONCRETE BENCH
 MANUFACTURER: TEAK WAREHOUSE
 COLOR: GREY
 SIZE: W16" X L63" X H18"
 MOUNTING: SURFACE

© TEAK WAREHOUSE

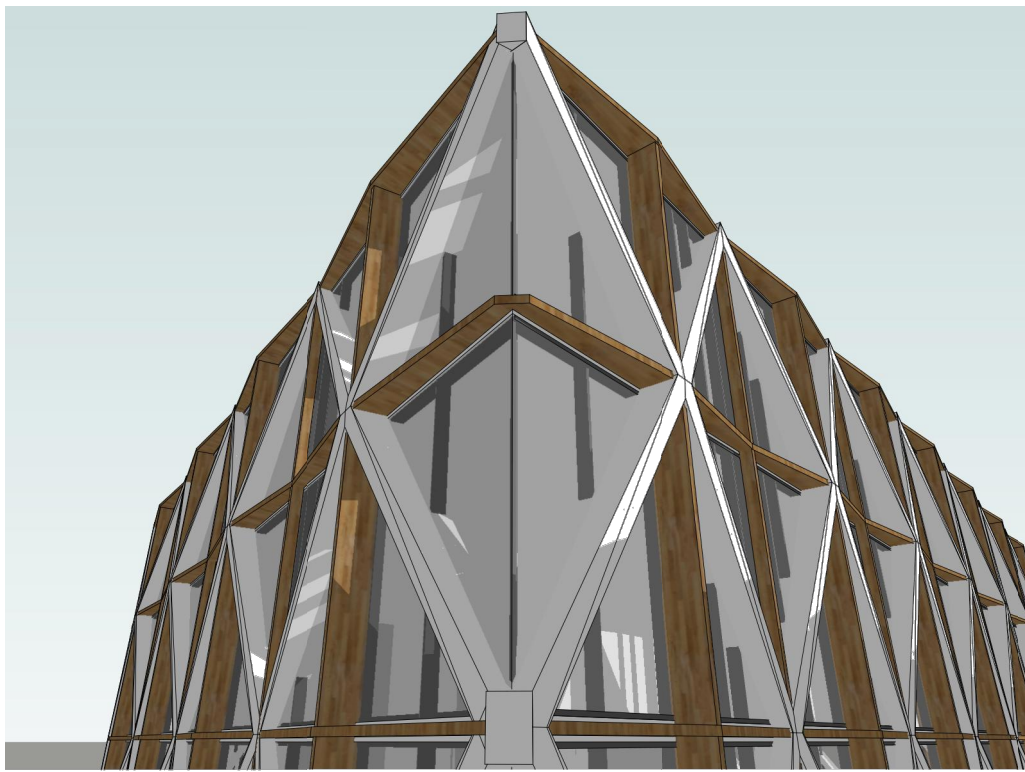


MAC LIGHT BOLLARD
 MANUFACTURER: STRUCTURA
 COLOR: NATURAL WOOD
 SIZE: 42" HEIGHT
 MOUNTING: SURFACE

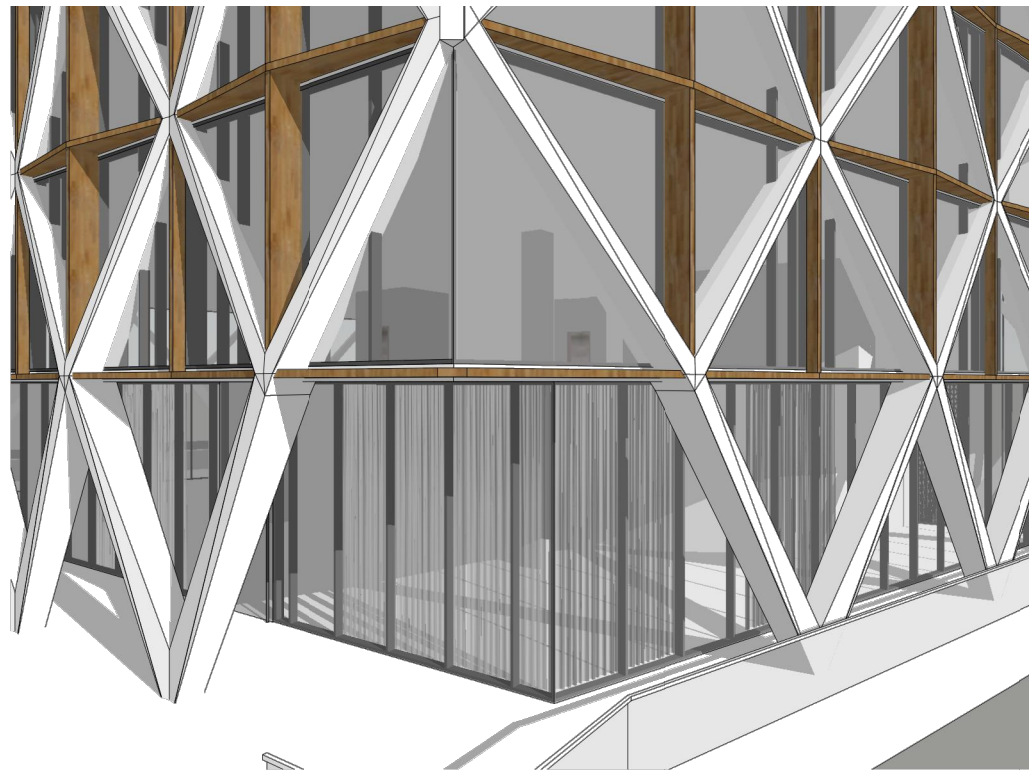


FGP BY FRANCISCO GOMEZ PAZ
 MANUFACTURER: FGP
 COLOR: NATURAL WOOD
 SIZE: 20" X 37" X 17Gal.
 MOUNTING: SURFACE

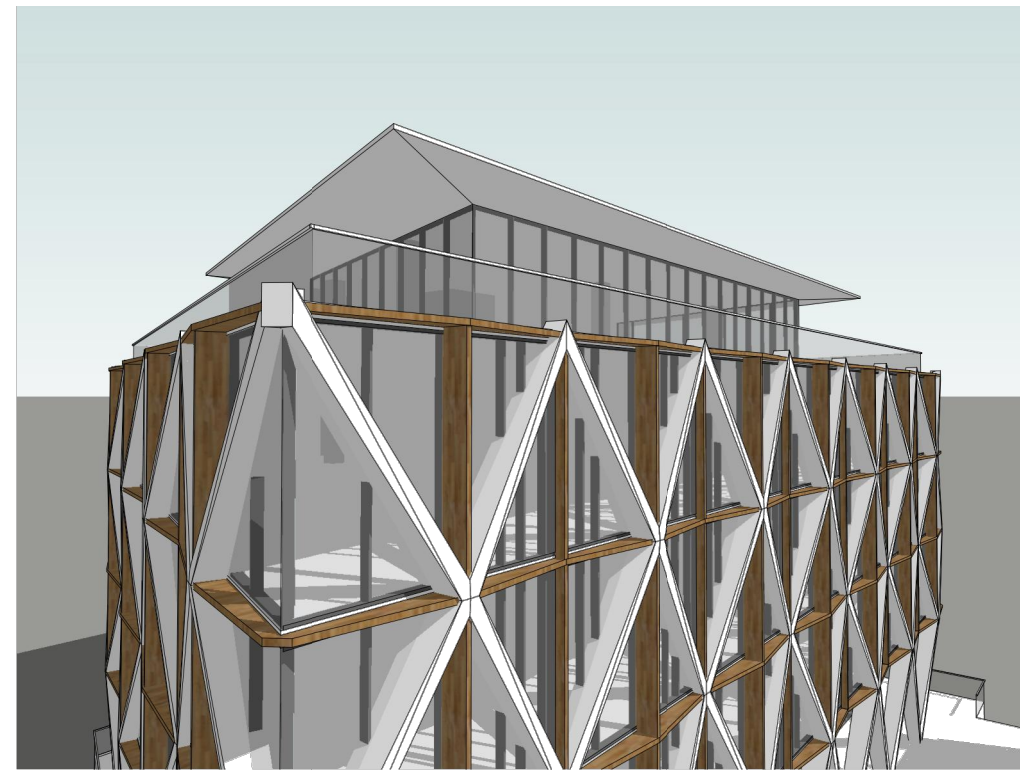
RIVERWALK URBAN FIXTURES



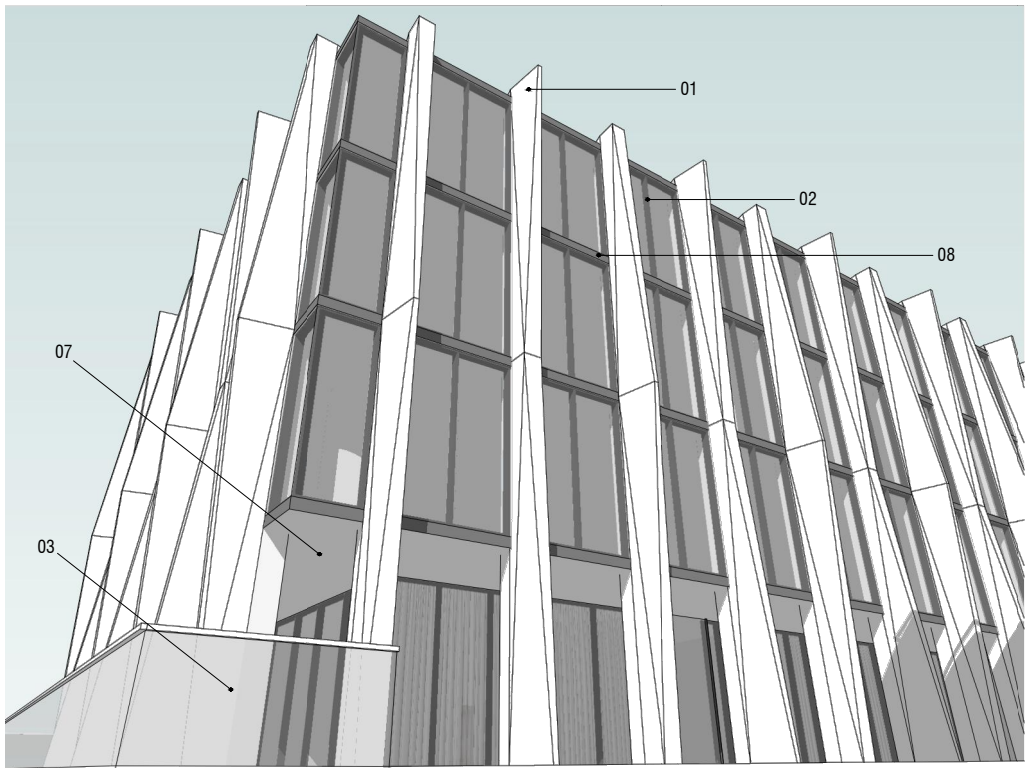
6 | Studio Facade Detail



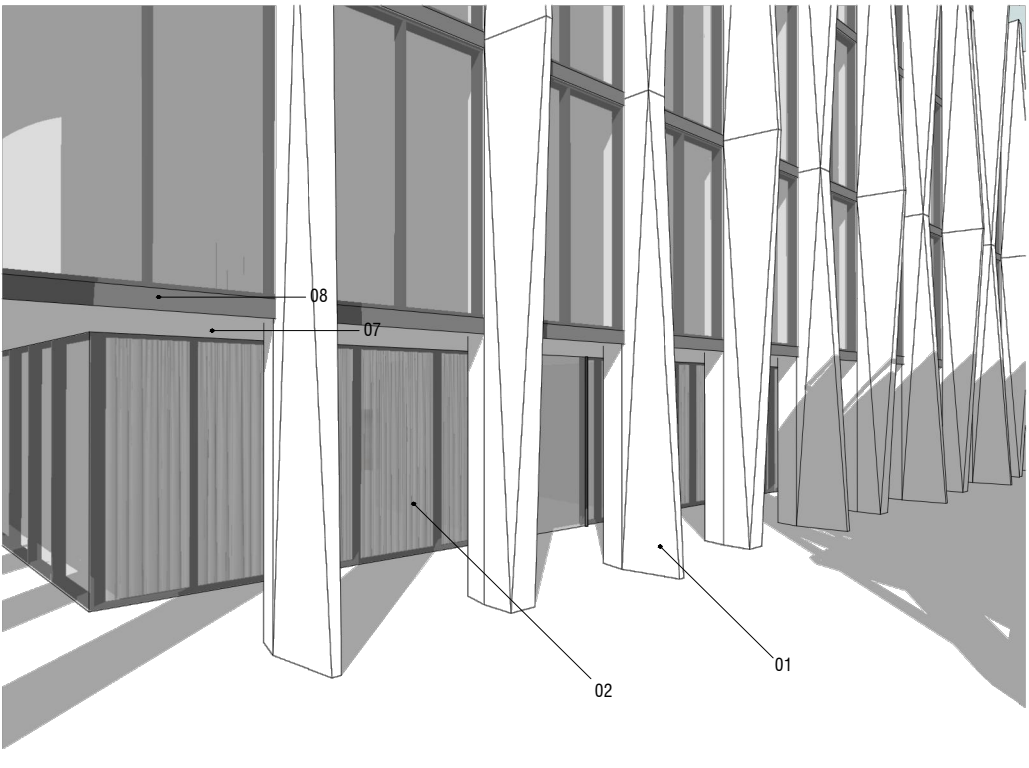
4 | Studio Facade Detail



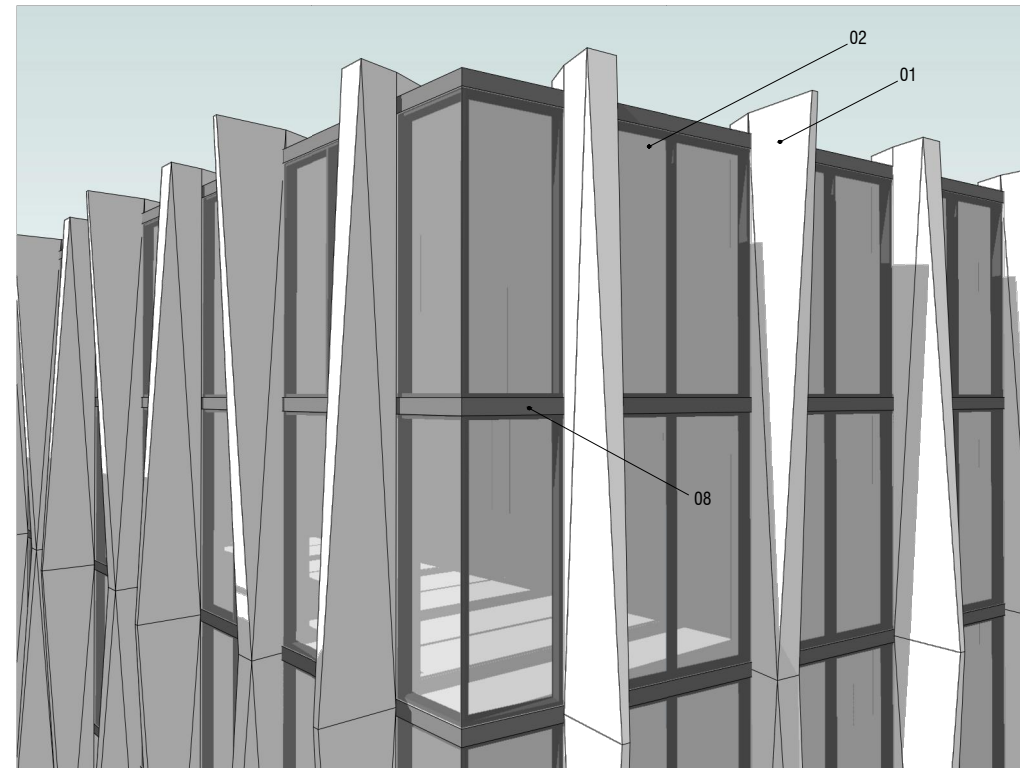
2 | Studio Facade Detail



5 | School Facade Detail



3 | School Facade Detail



1 | School Facade Detail

MATERIAL LEGEND

01 - EXPOSED ARCHITECTURAL CONCRETE STRUCTURAL ELEMENT
06 - IPE WOOD FINIS

02 - 4-WAY STRUCTURAL SILICONE GLAZING SYSTEM
07 - EXPOSED ARCHITECTURAL CONCRETE

03 - GLASS RAILING
08 - SLATE GREY ALUMINUM SLAB COVER

04 - EXPOSED ARCHITECTURAL CONCRETE WALL
09 - EXPOSED ARCHITECTURAL CONCRETE ROOF SLAB

05 - STEEL LOADING DOCK GATE
10 - RAMP

aj/A

alfonsojurado/ARCHITECTURE
3510 N Miami Ave, Ste.406
Miami, FL 33137
305.206.6214 T

N A E E M K H A N S T U D I O S

1175 NW South River Drive, Miami, Florida

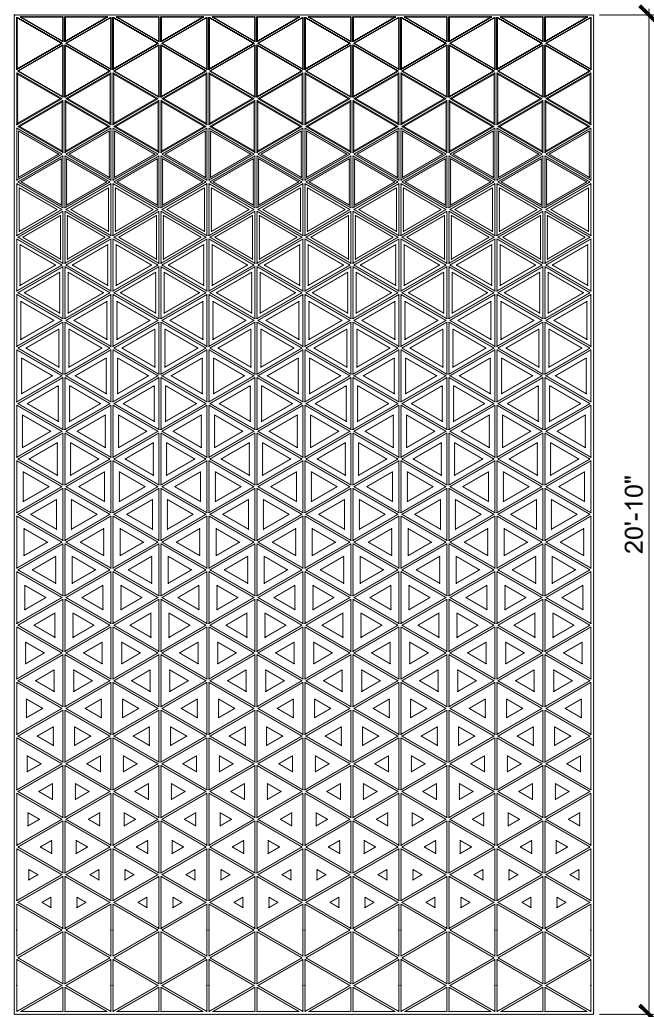
A p r i l 2 6 , 2 0 1 9



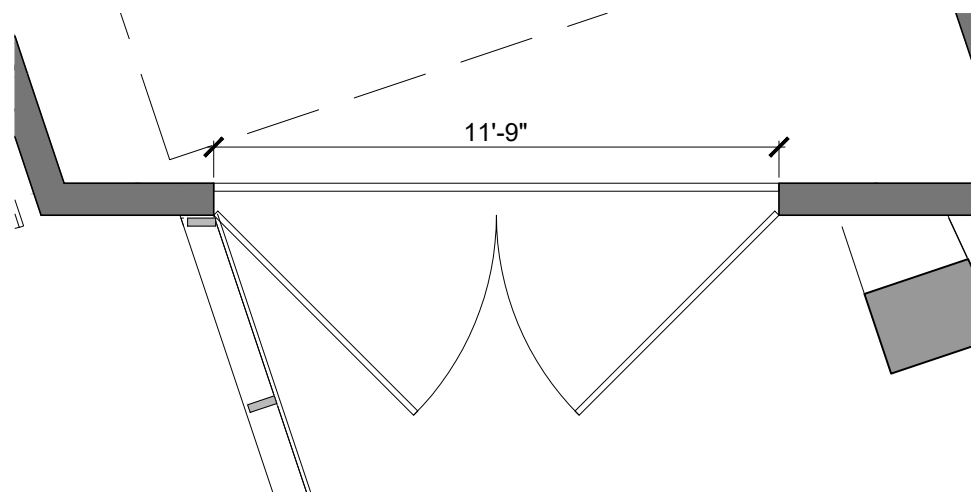
Materials

A6|01

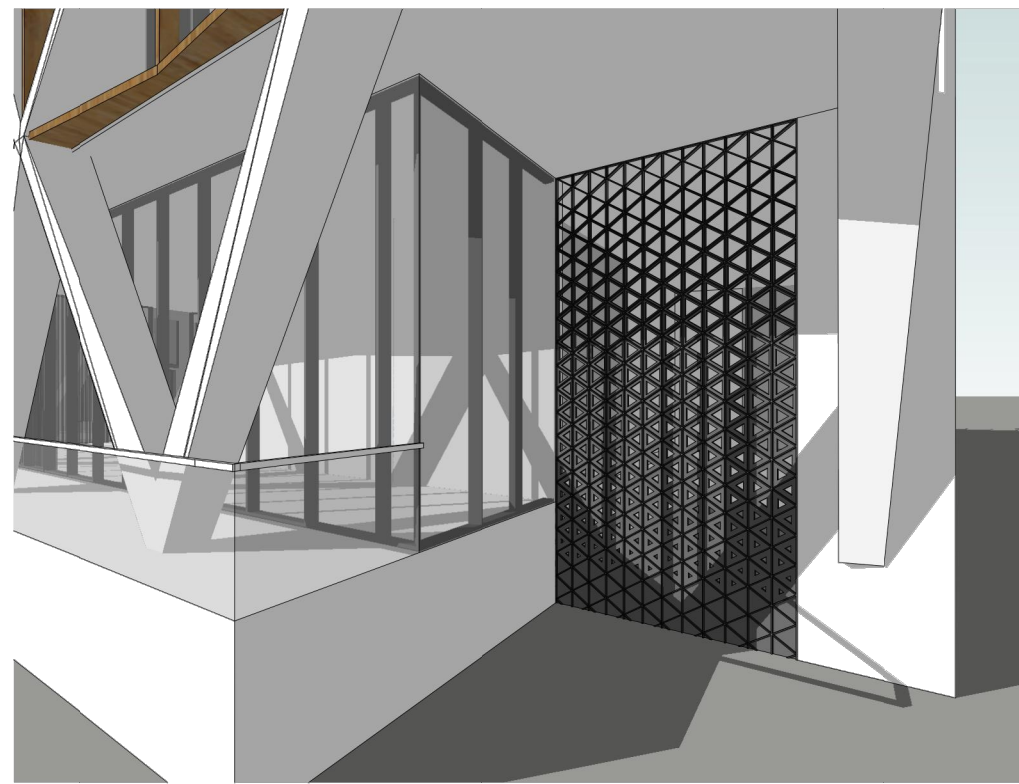
Scale: N/S



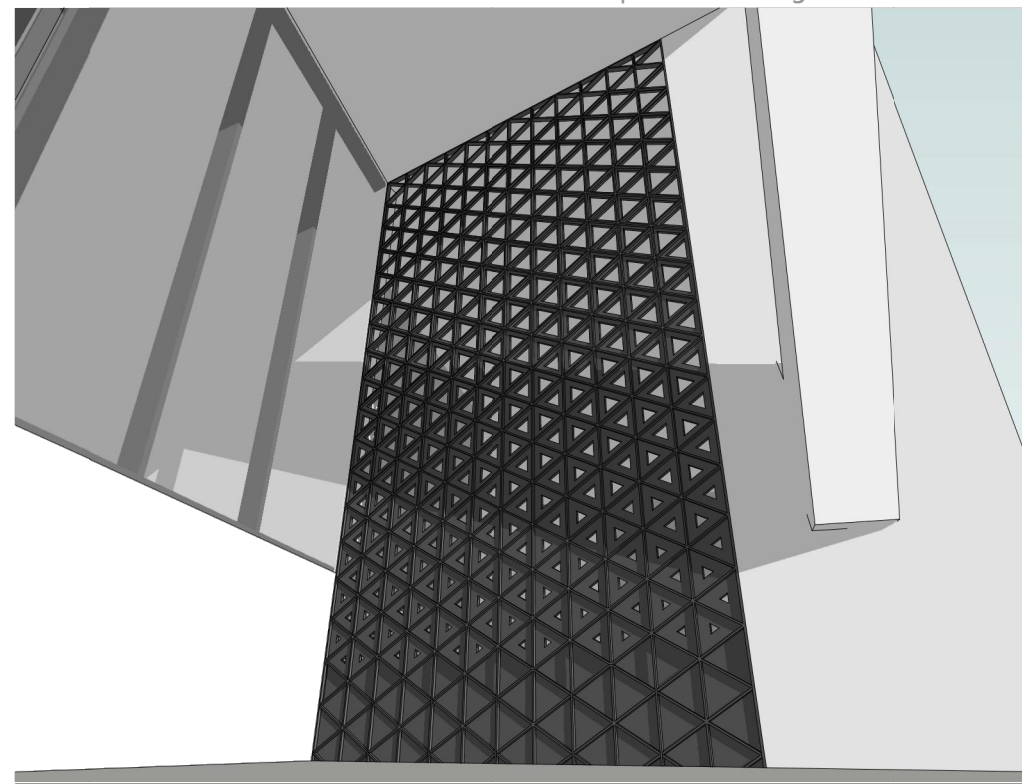
1 | Loading Gate Elevation Detail



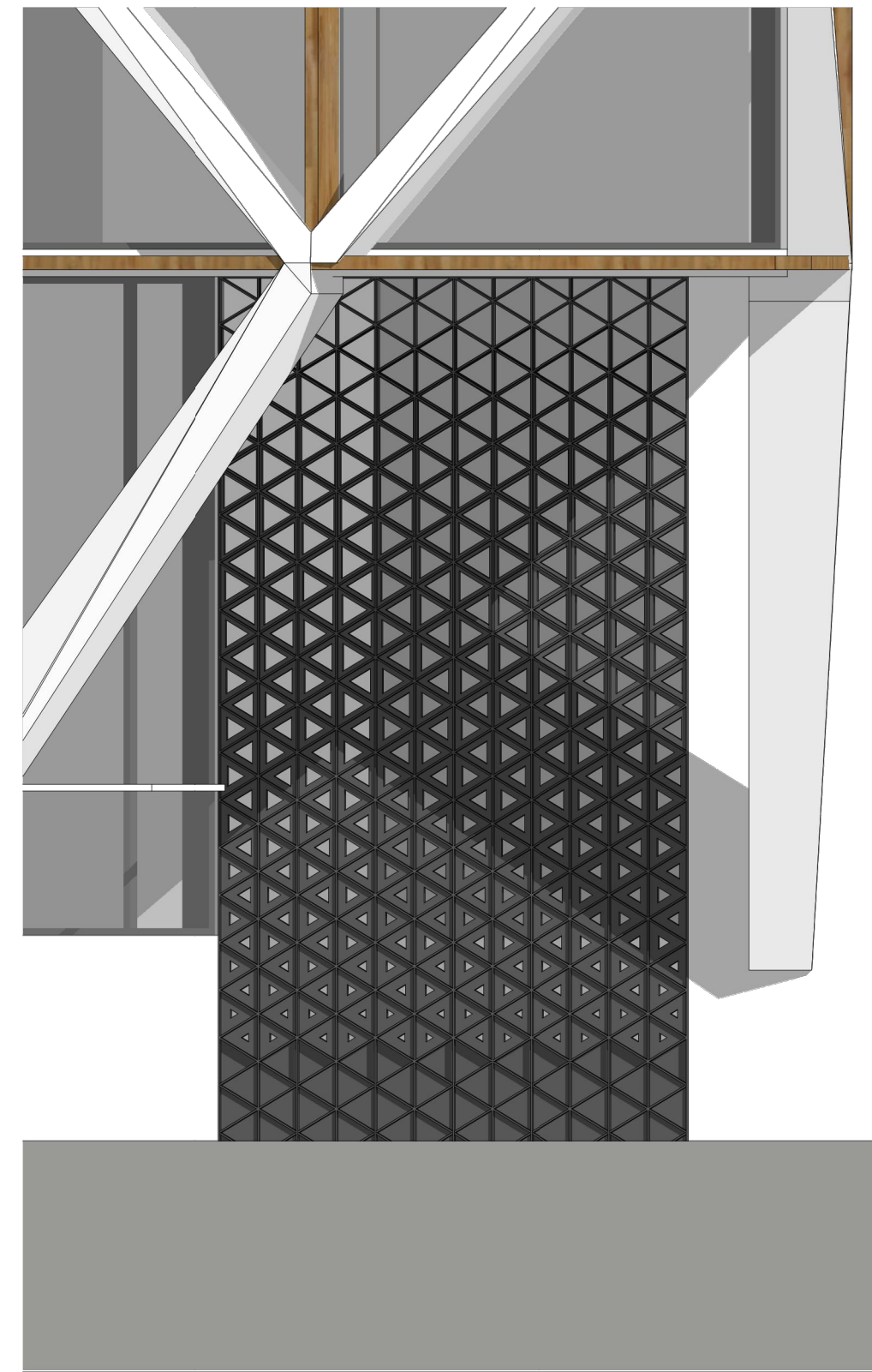
1 | Loading Gate Plan Detail



3 | Loading Gate View



2 | Loading Gate View



1 | Loading Gate Elevation

MATERIAL LEGEND

- 01 - EXPOSED ARCHITECTURAL CONCRETE STRUCTURAL ELEMENT
- 06 - IPE WOOD FINIS

- 02 - 4-WAY STRUCTURAL SILICONE GLAZING SYSTEM
- 07 - EXPOSED ARCHITECTURAL CONCRETE

- 03 - GLASS RAILING
- 08 - SLATE GREY ALUMINUM SLAB COVER

- 04 - EXPOSED ARCHITECTURAL CONCRETE WALL
- 09 - EXPOSED ARCHITECTURAL CONCRETE ROOF SLAB

- 05 - STEEL LOADING DOCK GATE
- 10 - RAMP